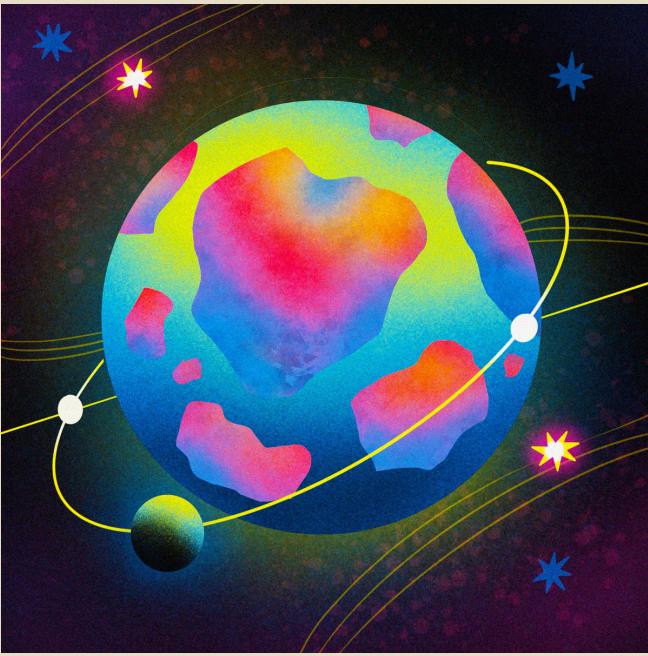


Elements of Sci-fi

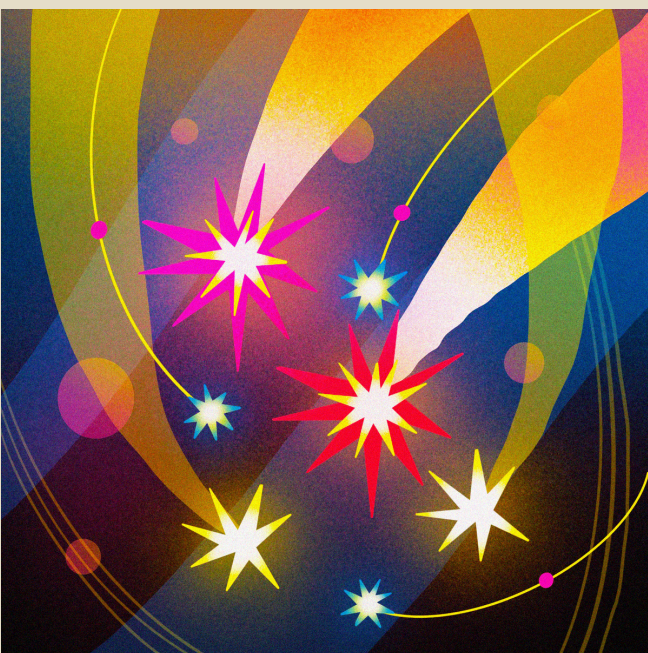
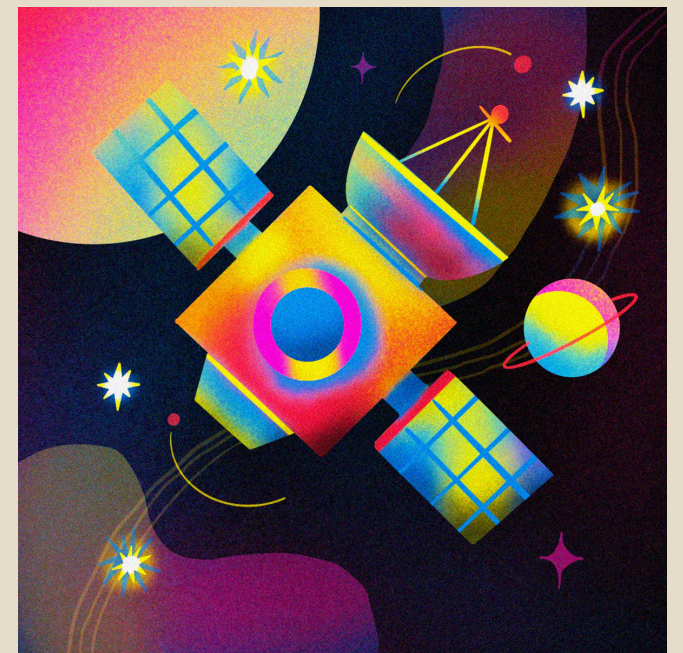


Unknown Setting

An unknown setting in science fiction could refer to an exotic, never-before-seen location or environment, or a futuristic setting that is yet to exist. It could also refer to an alternate universe or timeline, or the setting of an alien world.

Technology

Technology is a major component of science fiction and can be used as a tool to explore the possibilities of a future world. Technology can be used to create a sense of realism and to explore the implications of a specific technology.



Time Travel

Time travel is a concept often explored in science fiction stories and films. It involves the idea that an individual or group of people could physically or mentally travel through time, either to the future or to the past.

Space Travel

In science fiction, space travel is typically portrayed as a means of exploring the universe, often with the aid of advanced technology. It can also be used as a vehicle for intergalactic conflict and exploration of the unknown.



Odd Characters

These characters may possess superhuman abilities, advanced technology, or be from other worlds. They are often larger than life, unlike characters in other genres, and often explore themes of humanity, alien life, and the consequences of technological advances.